



Tina River Hydropower Development Project
Ministry of Mines, Energy and Rural
Electrification
Solomon Islands Government

Position Description

Office: Honiara	Date: 1 st August 2022
Position: Community Liaison Officer (Gender Focal Point)	

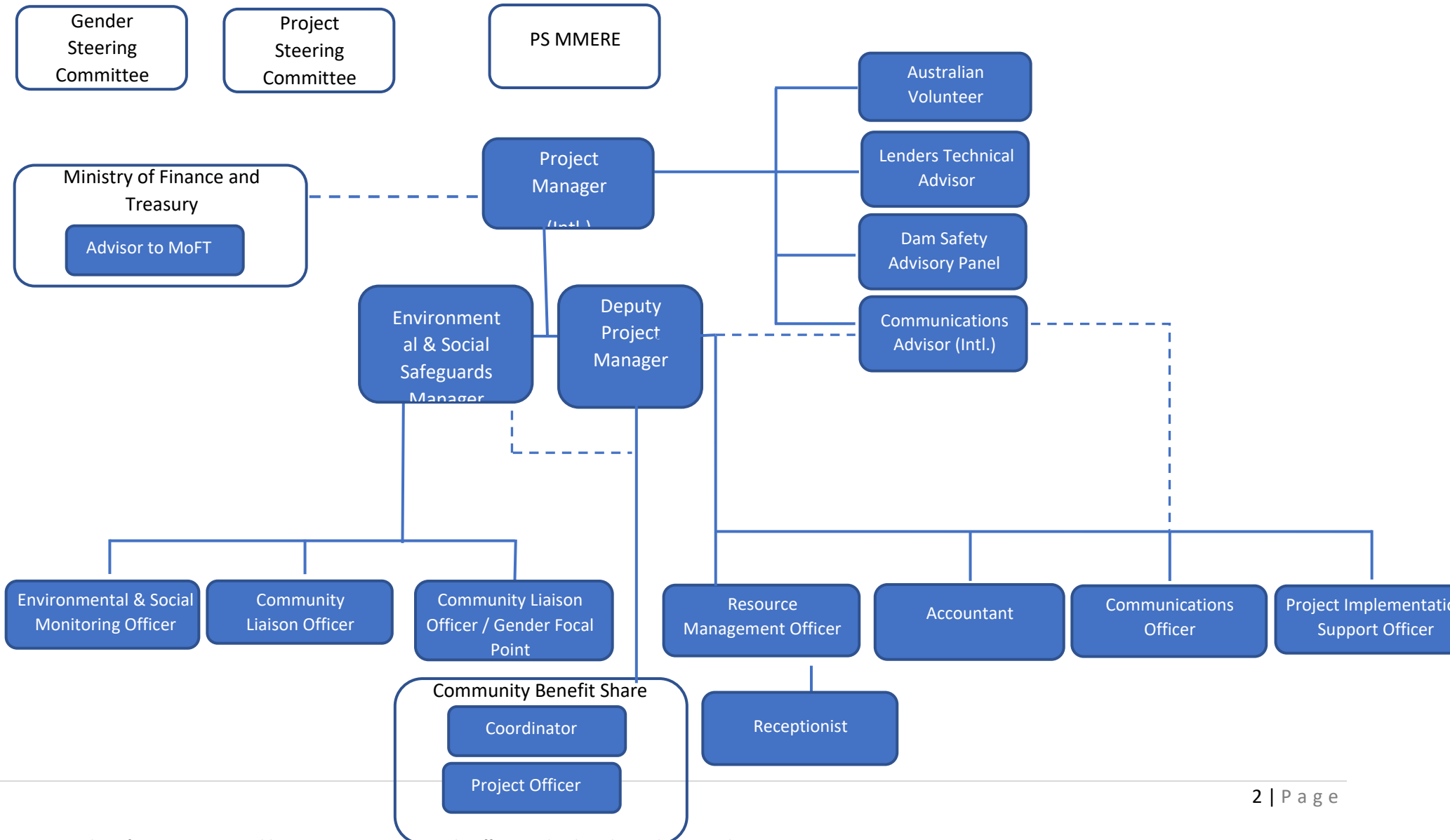
TERM AND LOCATION

The Community Liaison Officer (Gender Focal Point) (CLO-GFP) shall be based in Honiara, Solomon Islands, with a local package to provide overall administration and leads Gender Action Plan, with CBSP and Benefit Share fund during the Construction phase of the Tina River Hydropower through the Project Office and other relevant stakeholders.

The position is for an initial period of 2 years (negotiable) with expected opportunity to renew up to a period of 3 years.

REPORTING LINES

- Report to the Environmental and Social Safeguard Manager



BACKGROUND

- (i) The Government of Solomon Islands (SIG) is implementing the Tina River Hydropower Development Project (TRHDP), located 35km southeast of Honiara at the upstream end of the Ngalimbiu River Basin in Central Guadalcanal. The TRHDP, the first major hydropower project in Solomon Islands, will reduce the average cost of electricity generation in Solomon Islands and improve the reliability of its supply. The key benefits of the project are reduced dependency on imported diesel fuel for power generation, stimulus to growth from lower cost and more reliable power supply, increased private sector investment flows into the sector and diversification of fuel mix with the introduction of sustainable and cleaner renewable hydro sources.
- (ii) Solomon Power (as the offtaker) signed a Power Purchase Agreement (PPA) on 6 December 2018 with Tina Hydropower Limited (THL), owned by Korea Water Resources Corporation (K-water) and Hyundai Engineering Company Limited (HEC). THL will build and operate the hydropower plant for 30 years as a Build Own Operate and Transfer (BOOT) scheme. SIG and THL have also executed an Implementation Agreement (IA) and Government Guarantee Agreement (GGA) establishing rights and responsibilities between SIG and THL. The Project reached financial close on 12 December 2019, on which date the PPA, IA and GGA became fully effective.
- (iii) Financing for the project is provided through a series of multilateral and bilateral loan agreements entered into by SIG, which have been on-lent by SIG to THL under the terms of a Facility Agreement (On-Lending Agreement) signed on 27 September 2019. The Concessional Financing Parties include the Asian Development Bank (ADB), International Development Association (IDA), Government of Australia's Australia-Pacific Islands Partnership (APIP) Fund, Green Climate Fund (GCF), Abu Dhabi Fund for Development (ADFD) and Economic Development Cooperation Fund (EDCF) managed by the Export-Import Bank of Korea.
- (iv) The Concessional Finance Parties require SIG and THL to adhere to a few environmental and social safeguard obligations. SIG has developed, and the Concessional Finance Parties have approved, the overarching safeguard documents to meet the safeguard policies and requirements of the Concessional Finance Parties including an Environmental and Social Impact Assessment (ESIA), a Land Acquisition and Livelihood Restoration Plan (LALRP), Community Development Plan (CDP) and a Gender Action Plan (GAP). Safeguard measures are to be further detailed in the Environmental and Social Management Plans (ESMPs) the majority of which are under preparation by THL and HEC and will be approved by SIG and the Concessional Finance Parties. A small number of plans are to be prepared by SIG and approved by the Concessional Finance Parties. Together these documents form the Safeguard Documents. SIG is responsible for implementing certain components of the Safeguard Documents and for overseeing THL's implementation of the remaining components.
- (v) THL has engaged HEC as the Engineering Procurement Construction (EPC) Contractor to design and construct the Project. THL issued a notice to proceed to HEC under the EPC Contract on 12 December 2019 and preliminary works on site, including UXO clearance,

equipment delivery and workers camp construction, are now underway. Access Road construction is expected to commence in May 2020. THL has engaged Stantec as the Owner's Engineer to oversee the work of HEC, including to oversee HEC's compliance with environmental and social safeguards.

- (vi) SIG has engaged the international hydropower consultancy firm, Norconsult, as the Lender's Technical Advisor under the On-Lending Agreement to monitor the construction against THL's project agreement obligations. Norconsult is also acting as the Independent Environment and Social Monitoring Agent required under SIG's agreements with certain Concessional Finance Parties. In this role, Norconsult will prepare quarterly audits of THL, SP and SIG's compliance with the Safeguard Documents, and undertake quarterly technical site visits and twice annual safeguard site visits.
- (vii) SIG, through the Project Office, acquired the land for the main Project site in August 2014 from five (5) customary landowning tribes. The Project Office assisted each of the tribes to establish a co-operative society under the *Co-operative Societies Act* to manage project related payments to the tribes. The Project Office continues to play an active role in the corporate administration of the tribal co-operatives, including by funding an independent accounting firm to act as an Administrator of the co-operative accounts, and supporting executive committee and Annual General Meetings.
- (viii) The land acquisition also involved a partnership arrangement under which the perpetual estate in the Project land was returned to a joint venture company owned equally by SIG and the five (5) tribal co-operative societies known as the Tina Core Land Company Pty Ltd (TCLC). The TCLC has leased the Project land to THL through a Land lease Agreement signed on 5 December 2019. In addition to the original purchase price, the tribal co-operatives will also receive a percentage of the power purchase price as a royalty payment and the benefits of rental payments under the Land Lease.
- (ix) The Project also includes the design and implementation of a community benefit share program. Funding has been secured from the Japanese Social Development Fund (JSDF) for a three-year community benefit share pilot (CBSP) program during construction. The pilot fund will focus on water supplies and electricity grid extension to schools, as well as providing pre-employment training to local community members. The pilot will also oversee the establishment of the long term community benefit share fund entity for the operations period. The community benefit share pilot is managed by a dedicated team within the Project Office and the environmental and social safeguards for the pilot are set out in the CBSP Environment and Social Management Framework Feb 2017.
- (x) The Project Office was the key implementation entity during the preparation phase of the Project and is now re-equipping for the construction phase. The Project Office, as part of the Ministry of Mines, Energy and Rural Electrification, is funded by IDA (Component 4) until December 2025 (see Project implementation schedule fig. 2). The Project Office will be responsible for coordinating and monitoring the implementation of the Project. In particular, the Project Office will ensure that SIG's obligations are met (as provided in the IA, GGA, financing agreements with Concessional Financing Parties, etc.), monitor THL to ensure fulfillment of its obligations (as provided in the PPA, IA, GGA, On-lending Agreement, direct agreements with

Concessional Financing Parties, Safeguard Documents, etc.), and monitor SIEA to ensure fulfillment of its obligations (as provided in its direct agreements with Concessional Financing Parties, Safeguard Documents, and a Side Letter agreement between SIG and SIEA signed on 30 January 2020).

(xi) Key activities of the Project Office relating to community liaison and gender focal point person include:

- Supporting the established tribal co-operative societies and the TCLC to be active in fulfilling their required obligations.
- Maintaining land ownership arrangements especially ensuring that the Land Lease Agreement (LLA) between the Tina Core Land Company (TCLC) and THL is well understood by the parties and the parties continue to maintain their LLA obligations.
- Implementing SIG's safeguard and land obligations under the Implementation Agreement and Safeguard Documents including livelihood restoration activities, archaeological (cultural) sites survey and compensation, social impacts monitoring, and implementation of the gender actions etc.
- Conducting community engagement and consultation and implementing SIG's obligations under the grievance redress mechanism and stakeholder engagement plan.
- Monitoring compliance by THL and SIEA of the environment and social requirements in the Concessional Finance Party Agreements, On-lending Agreement, Safeguard Documents, and the Side Letter agreement between SIG and SIEA etc.
- Supporting the Lender's Technical Advisor's contract to perform the function of an independent environment and social auditor.
- Gathering data and reporting on progress and compliance with environmental and social standards in SIG's quarterly reports, advising Concessional Finance Parties of significant issues arising, and alerting SIG to any significant non-compliances with potential to halt SIG or Concessional Finance Party lending obligations.
- Advising the SIG Steering Committee of any significant social issues and facilitating regular Gender Steering Committee meetings.
- Hiring a non-governmental organization (NGO) to work with landowning tribes in the upper catchment to support the conservation and protection of this area; and
- Supporting the JSDF Community Benefit Share Pilot Project to comply with applicable environment and social safeguards.

KEY POSITION RESPONSIBILITIES

Responsibilities

- Report to the ESS Manager and or in their absence, the Deputy Project Manager (DPM)
- Liaise, promotes, and implement SIG components of the projects gender action plans [GAP] to the communities, and the safeguard components of SIG's and the THL contract with the ESS Manager and CLO

- Promotes and coordinates between THL/HEC and local communities, the press and NGOs and prepare awareness on the social monitoring contractor to assist the communities in the implementation of the social monitoring activities
- Liaise with the project implementing entities THL and HEC to monitor and support their implementation of gender initiatives across the projects safeguard documents
- Lead establishment of GAP steering committee and facilitate quarterly GAP steering committee meetings
- Conduct quarterly women's community consultation program and establish women's consultative forum (see LALRP entitlements matrix's and GAP).
- Track and disaggregate consultation records and meeting attendance by gender
- Assist the consultant preparing the social impacts monitoring plan to design and coordinate annual survey of tribal cooperative members (women) in accordance with GAP requirements and manage the implementation of the survey by the data collection and analysis consultant
- Support and facilitate annual meetings of the core land tribes cooperative societies matrilineal membership committee
- Prepare quarterly GAP progress report for inclusion in projects safeguards reporting
- Set up and work with community reference groups (e.g. men's, women's, youths, and leaders etc.).
- Disseminate project information to affected or interested communities
- Assist the environmental and social safeguard monitoring officer in monitoring THL's implementation of the project's environmental and social management plans.
- Assist and support consultants conducting studies in the communities (household survey, women survey)
- Support the implement of the Japanese social development fund (JSDF)/community benefits share project (CBSP) through working closely with the community benefits share coordinator and assistant coordinator.

Reporting

- Review the Community Engagement work plan for the construction stage of the Project
- Prepare quarterly report in deliverables to ESS Manager
- Review THL's quarterly safeguard report
- Convene regular or as needed community awareness with all stakeholders quarterly to provide updates and discuss joint approaches to arising issues
- Maintain an up to date contact list of Community awareness Minutes
-

DELIVERABLES

Deliverables include but are not limited to:

- Prepare annual GAP work plan with budget
- Prepare a record management system to document quarterly meetings of the GAP Steering Committee
- Prepare quarterly consultation with women's community consultation program and establish women's consultative forum (see LALRP entitlements matrix's and GAP)

- Prepare quarterly GAP progress report for inclusion in projects safeguards reporting
- Provide input on the drafts social impacts monitoring plan

KEY CHALLENGES

- Providing an informative program to communities on the context on the Construction phase of the first large scale infrastructure project in Solomon Islands and adapting and teaching new approaches for a complex project in a unique environment.
- Working in a cross-cultural environment, including with customary landowners
- Building and maintaining a mechanism to enhance the dissemination of information to all communities and relevant stakeholders
- Building strong relationships with a wide variety of stakeholders including Tina Hydropower Ltd (the international developer), the EPC Contractor, Concessional Finance Parties, indigenous leaders and communities and relevant SIG Ministries
- Working effectively with a cross-disciplinary team

KEY EXTERNAL CONTACTS

Developer

- Environment and Social Team, Engineering Team and Chief Financial Officer, of Tina Hydropower Ltd

Concessional Finance Parties

Team leaders and environment and social teams of:

- World Bank (International Development Corporation)
- Asian Development Bank
- Export-Import Bank of Korea managing the Economic Development Cooperation Fund (EDCF)

SIG contractors and consultants

- Norconsult, Lenders Technical Advisor
- The Administrator of the tribal co-operatives
- Short term consultants to the Project Office including the social monitoring consultant

Tina Community and Landowners

- Communities of Malango and Bahomea in Central Guadalcanal
- Members of the tribal co-operatives of the five (5) landowning groups
- Tina Core Land Company Board of Directors

SIG Ministries

- Ministry of Environment, Climate Change and Disaster Management
- Ministry of Commerce, Industry, Labour and Immigration

QUALIFICATIONS, SKILLS AND EXPERIENCE REQUIRED

- University degree in Arts, Social development, management, social sciences, social law or similar, with a minimum of 8 years post qualification experience
- Demonstrated experience in the field of gender and social development including gender and development related activities of infrastructure and energy sector projects (would be an advantage).
- Experience preparing or reviewing safeguard and gender documentation including Environmental and Social Impact Assessments, gender action plans, or environment and social management plans
- Experience implementing or monitoring compliance with environmental or social safeguard documentation, with experience in infrastructure and/or hydro projects preferred
- Ability to build strong stakeholder relationships, and proven tenacity to influence developers or private stakeholders to achieve safeguard and gender outcomes
- Ability to manage a complex project, work to deadlines and establish procedures for monitoring and reporting
- Ability to manage a team, build professional skills, and set and monitor tasks and sub-projects
- Strong interpersonal and communication skills including in a culturally diverse or multi-disciplinary environment
- Ability to recruit, engage and manage external contractors
- Experience in community consultation or engagement, with experience in Solomon Islands or Pacific context preferred and ability to speak or willingness to learn Solomon Islands' Pijin
- Willingness to learn new skills and take on novel challenges, and a passion for development project delivery
- Ability to review and manage contracts and advise on corporate governance obligations
- Familiarity with Solomon Islands' environment and land laws and environmental consents beneficial

APPENDIX: PROJECT BACKGROUND

- (i) Solomon Islands' electricity sector poses two main challenges: access and price. The Solomon Islands has a population of just over half a million people dispersed across 90 inhabited islands and one of the lowest population densities (18 persons/km²) and urbanization rates (17 percent) in the world. Grid electricity is supplied by Solomon Island Electricity Authority (SIEA), a state-owned vertically integrated power utility trading as Solomon Power. The low densities make the capital costs of connecting consumers to the electricity grid very high relative to the revenue generation of the utility. As a result, less than 20 percent of the total population has access to any electrical power, with the rural areas having access rates of less than 5 percent on average. When electricity is available, it is many multiples more costly than elsewhere in the world and is often less reliable.
- (ii) The Project will comprise an approximately 70-meter-high roller compacted concrete (RCC) dam located in a narrow gorge on Tina River; a water way including a 3.3km headrace tunnel to convey water from the dam to the powerhouse; 120m deep shaft incorporating a surge chamber, and a surface penstock leading to a trifurcation and powerhouse located 5.7 km downstream of the dam site with 3 x 5MW Francis machines installed. Average annual energy generation is expected to be 80.6 GWh. The main dam, power station and tunnel works form Component 1 of the Project.
- (iii) The Project also encompasses an access road to run from Kukum Highway to the Project site divided into two lots. Lot 1 is the upgrading of the 13.2 km existing gravel road from Kukum Highway to Managakiki Village. Lot 2 is the construction of a new 5.5 km access road from Managakiki Village to the powerhouse and dam sites. Once completed, Lot 1 would be maintained by SIG as an asset in the national road network to enhance the mobility and well-being of the local communities, while Lot 2 would be maintained by THL as part of the operations of the hydropower plant. Access road works form Component 2 of the Project.
- (iv) Power will be transmitted through a separate twin circuit, 66kV overhead line to the Lungga power station. The transmission line will be developed by SIEA, outside the BOOT scheme (Component 1 and 2). SIEA's routing and design study of November 2016 identified a transmission voltage of 66 kV to reduce losses. The transmission line (23 km) will also have a physical contingency by erecting two parallel single-circuit transmission lines. This Component 3 is financed by SIEA through credit from the Australian Infrastructure Fund for The Pacific (AIFFP).

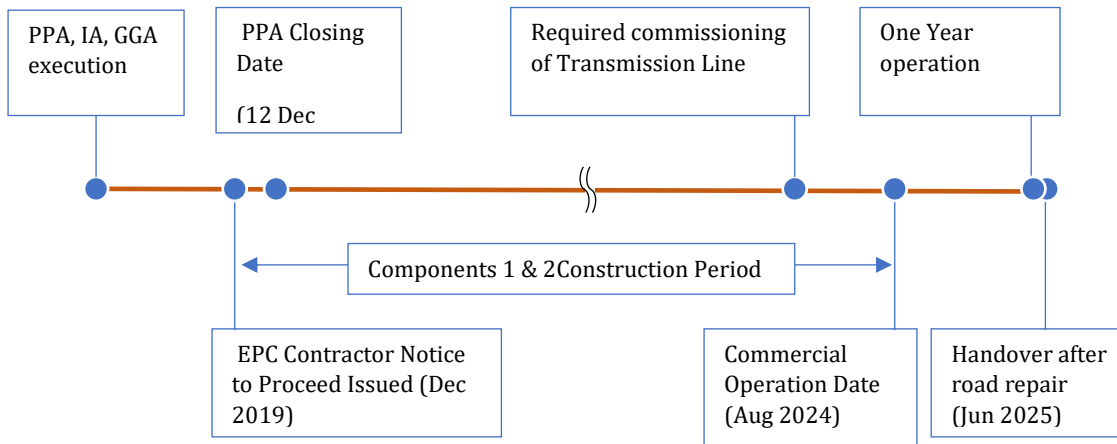


Figure 1: Key Implementation Milestones

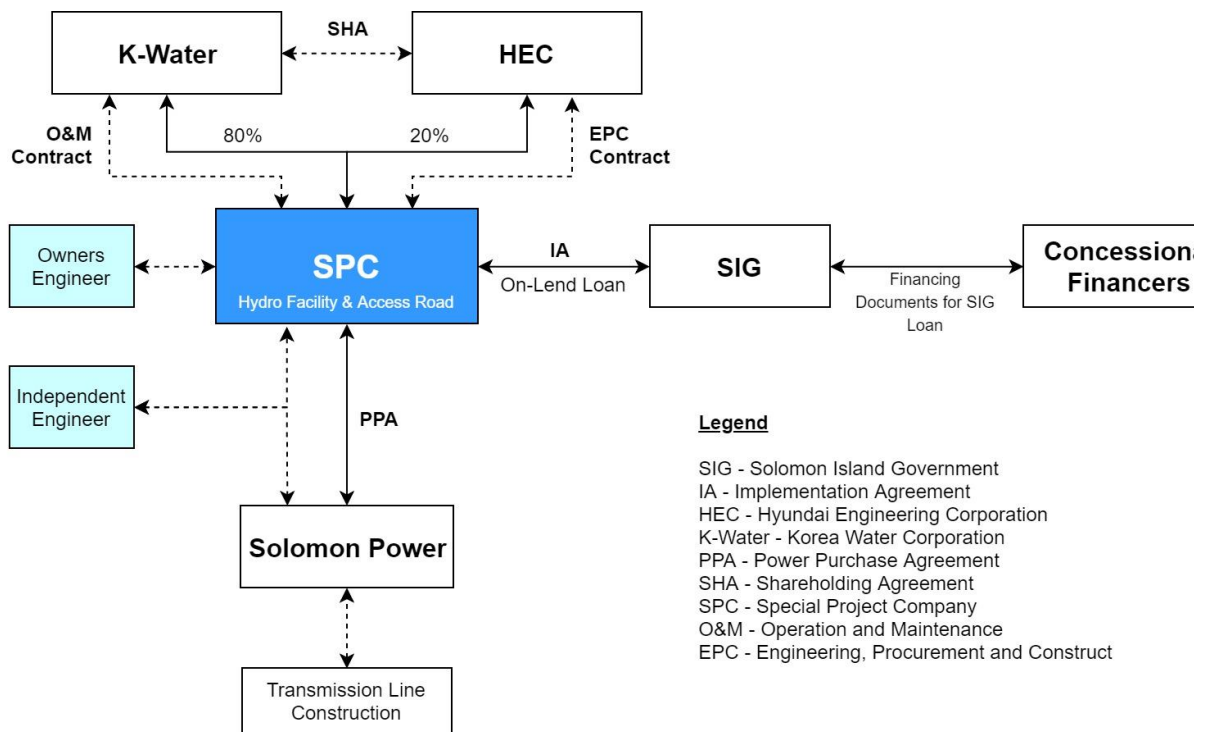


Figure 2: Implementation Structure